



ESAVS
European School for
Advanced Veterinary Studies

Equine Dentistry
31 August - 04 September 2009, Hannover/DE
Location and Hotel Information

Course Location

University of Veterinary Medicine Hannover

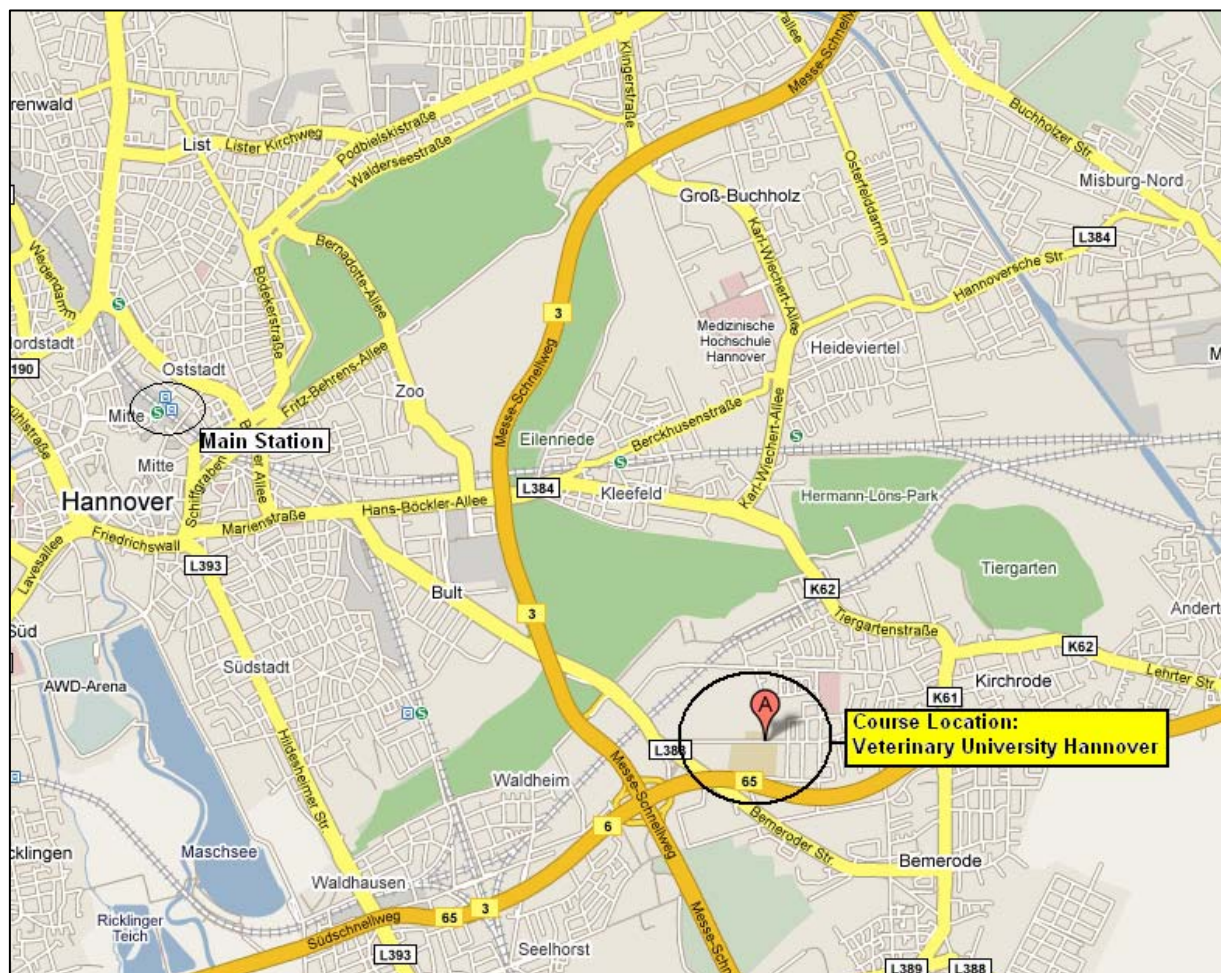
Bünteweg 2

30559 Hannover

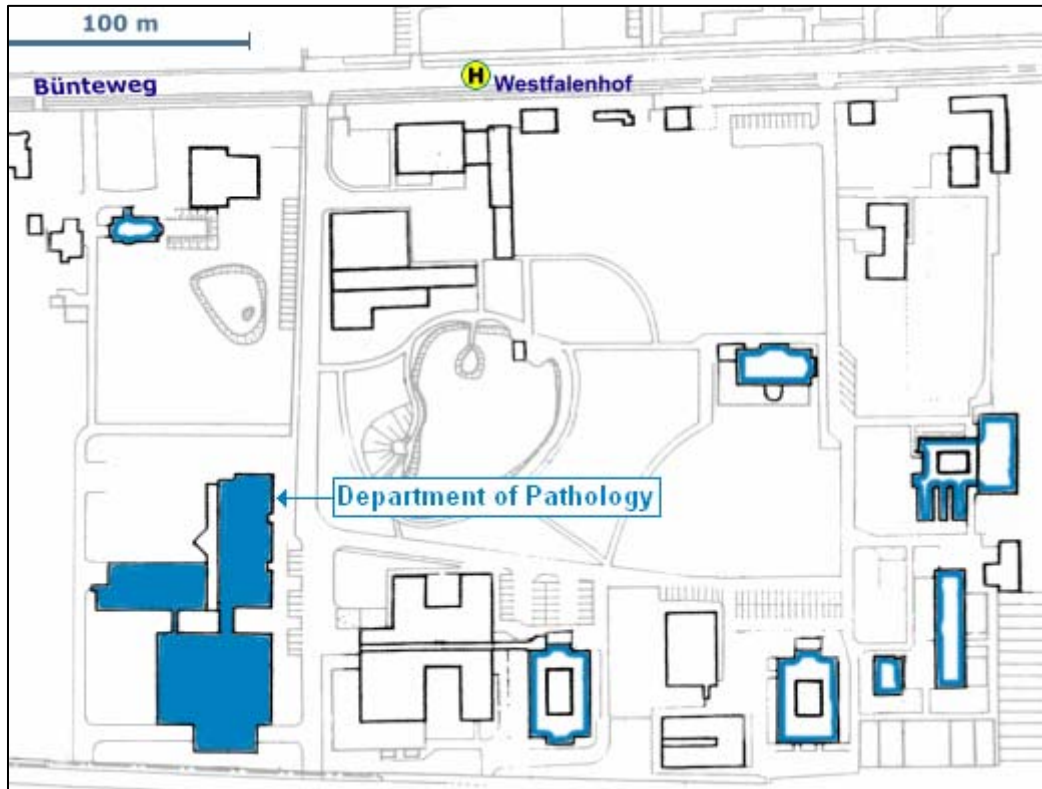
Phone: +49 511 953 60

Fax: +49 511 953 8050

URL: http://www.tiho-hannover.de/index_e.htm



Campus Map



Travel / Flight Information



Flights to / from Hannover:

Hannover has an international airport:

http://www.hannover-airport.de/fluginfo_index.html?&L=1 (English Version)

Flughafen Hannover Langenhagen GmbH
Petzelstraße 84
30855 Langenhagen

Flights to Hannover are in general operated by Low Cost Carriers. You can book the flights via the websites of the airlines. For a complete list of airlines at Hannover Airport please go to: <http://www.hannover-airport.de/1253.html?&L=1>

Travelling from Sweden: Direct flights from Stockholm to Hanover are operated by the Low Cost Carrier Air Berlin.

Travelling from UK: Direct flights from London to Hanover are operated by Air Berlin and British Midland.

From Hannover International, you have good transport connections to the town centre.

For transport to / from the airport you can use

- a) the local public bus No. 470: From Hannover Airport to the station Langenhagen Zentrum and further with the city bus. Busses depart two to three times an hour.
- b) the train: Train No. 5 serves Hannover Airport from 5 AM to 12 PM every 30 minutes. Currently, one-way tickets cost 2,80 €.



For the official site of the **public transportation** company in **Hannover** (in English) please visit <http://www.gvh.de/index.html?&L=1>

Bus lines, trams and subway plans for [download](#) 

The bus stations “**Westfalenhof**” and “**Bünteweg**” can be found on the orange bus line 370 in the right part of the picture.

Hannover City Website: <http://hannover.de/english/index.html> (English Version)

List of Recommended Hotels



Queens Hotel Hannover

Tiergartenstraße 117

30559 Hannover

Phone: +49 511 51030, Fax: +49 511 5103510

Web: <http://www.queens-hotel-hannover.com>

ESAVS Contingent

Distance to course location: 2,5 km - [Google Map](#)

Rates: 82,00 € first night

95,00 € following nights, breakfast included.

The 178 single and double rooms are modern and elegantly furnished. All rooms are appointed with TV, pay TV, minibar, telephone, hair dryer, analog laptop connection, Wireless Lan, business desk, trouser press and a bathroom with shower or bath.

The ESAVS has reserved a contingent at this hotel. Please book by yourself and refer to “ESAVS Course Fahrenkrug” in order to receive the above mentioned prices. The option expires 17 August 2009.

Public Transport to the Course Location:

At the “Tiergarten” bus station, get on bus no. 370 (direction Damm/BBS-Wirtschaft). The destination bus stop is the “Westfalen-Hof”. It will take you about 7 minutes.



Hotel Tosca

Dörriesplatz 2
30625 Hannover
Phone: +49 511 5332246 , Fax +49 511 5332205
Web: <http://www.hotel-tosca.de>
E-Mail anfrage@hoteltosca.de

Distance to course location: 3,9 km – [Google Map](#)

Rates: [click here](#)

The Hotel Tosca offers cosy hotel rooms, each with bath/cableTV and view at the hotel garden.

Public Transport to Course Location:

The station “Kantplatz” is very close to the hotel. Get on the tram no. 5 to the direction Hannover Andernten. Get off at the “Großer Hillen” station. Take bus no. 370 (direction Damm/BBS-Wirtschaft). The destination bus stop is the “Westfalen-Hof”. It will take you about 20 minutes.



GHOTEL hotel & living

Lathusenstraße 15
30625 Hannover
Phone: +49 511 53030
Web: <http://www.ghotel.de/>

Distance to Course Location: 4,6 km - [Google Map](#)

The 'GHOTEL hotel & living Hannover' is located in a spacious, idyllic park. It has 64 single rooms, 97 double rooms, 4 suites and 160 apartments. All rooms come with shower, toilet, hairdryer, radio, satellite and pay TV. WLAN can be provided upon request.

Public Transport to Course Location:

Get on one of the busses to the direction “Am Pferdeturm”, exit at the “Kantplatz”. Get on the tram no. 5 (direction Hannover Andernten). Get off at the “Großer Hillen” station. Take bus no. 370 (direction Damm/BBS-Wirtschaft). The destination bus stop is the “Westfalen-Hof”. It will take you about 25 minutes.



Hotel Kleefelder Hof

Kleestraße 3a
30625 Hannover
Phone: +49 511 554740-0, Fax: +49 511 554740-77
Web: [click here](#)
E-Mail: info@kleefelderhof.com

Distance to course location: 4,9 km – [Google Map](#)

Economy Single Rooms are comfortably and practically furnished. They have a size of 14m². Refreshing mineral water is served complimentary.

Public Transport to Course Location:

The station “Kantplatz” is very close to the hotel. Get on the tram no. 5 to the direction Hannover Andernten. Get off at the “Großer Hillen” station. Take bus no. 370 (direction Damm/BBS-Wirtschaft). The destination bus stop is the “Westfalen-Hof”. It will take you about 20 minutes.



Hotel Revery garni

Aegidiendamm 8
30169 Hannover

Distance to course location: 5,7 km - [Google Map](#)

Please see rates and book this hotel via [hotel.de](#)
simply book for less

The two-star Hotel Revery garni enjoys a central setting only 5 minutes on foot to the city centre. The 22 modern and individually arranged single and double rooms are all equipped with shower, toilet and colour TV. Every day you will find a bottle of mineral water in your room free of charge. **The hotel does not accept credit cards. In case of arrival after 7 p.m., the room key will be left in a box with a code to the right of the entrance.**

Public Transport to Course Location:

The tram station "Aegidientorplatz" is a 5-min walk from the hotel. Get on tram no. 1, direction Laatzen, and exit the train at the station "Altenbekener Damm". From there, take bus no. 370, direction Mehrum Mitte. The destination bus stop is the "Westfalen-Hof". It will take you about 20 minutes.



Pension Leipziger Hof

Küsterstraße 2
30519 Hannover
Phone: +49 511 831780, Fax: +49 511 8436136

Distance to course location: 5,7 km - [Google Map](#)

Please see rates and book this hotel via [hotel.de](#)
simply book for less

The Pension Leipziger Hof lies near the city of Hanover. There are 11 comfortable guest rooms with ensuite facilities, direct dial telephone, clock radio and cable TV. A breakfast buffet is served each morning. Furthermore, guests can use the hotel's fax machine and are welcome to leave their vehicles on the car park in front of the hotel.

Public Transport to Course Location:

From the station "Fiedelerstraße", take tram no. 1 (direction Langenhagen) and change onto bus no. 370 (direction: Mehrum Mitte) at the stop "Altenbekener Damm". The destination bus stop is the "Westfalen-Hof". It will take you about 20 minutes.

For alternative accommodation in Hannover, please visit

