

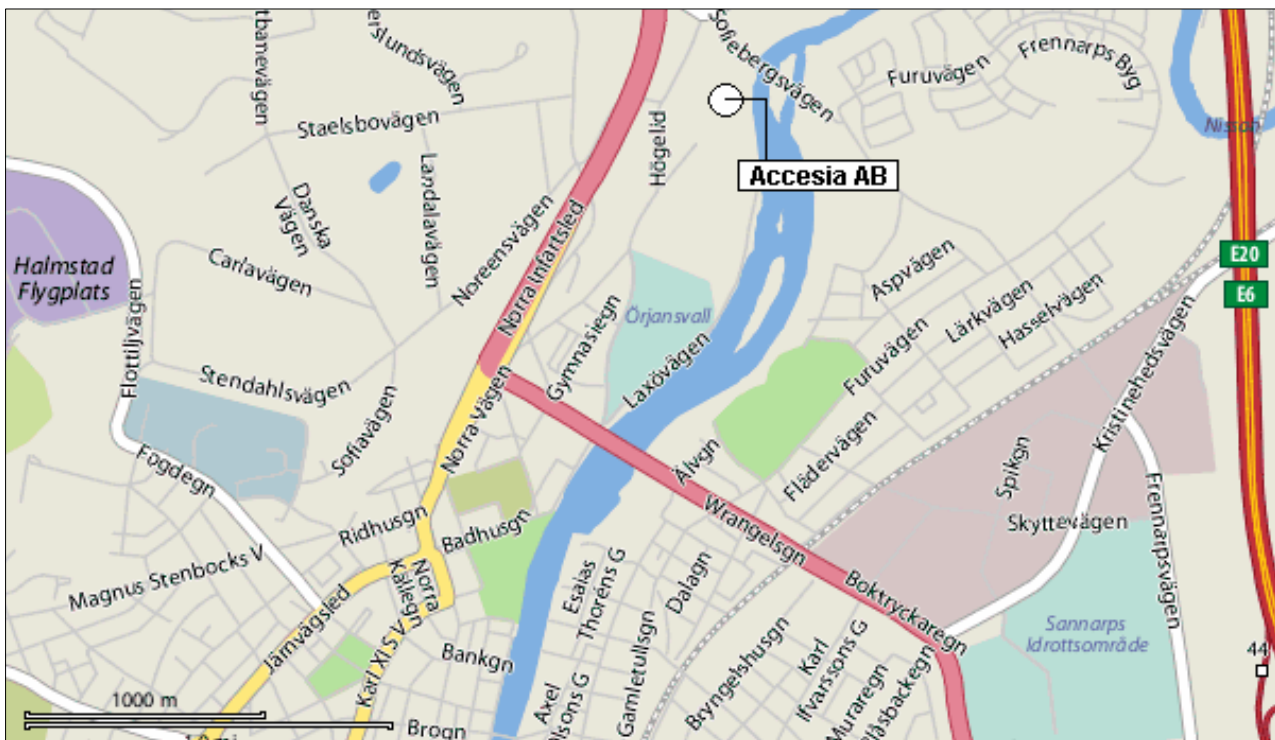


**Course Location:**

**Accesia AB**  
**Slottsmöllan G**  
**30231 Halmstad**  
**Sweden**  
Web <http://home.accesia.se>



**Location Map:**



Information about the city of Halmstad you may find via the website of the [Halmstad Tourist Office](#)

For information on public transport in Halmstad please visit <http://www.hlt.se>



## Travel and Airport Information

Accesia AB is easily accessible by flying into Copenhagen, Stockholm or Gothenburg and then taking a train or direct flight to Halmstad.

The centre of Halmstad is within walking distance to the course location.

*If you book a TRAIN TICKET you may have to provide a Swedish telephone number. You may use the phone number of Accesia: 035 39797.*

**Please note that the currency in Sweden is not Euro but Swedish Kronor (SEK)!**

Exchange rates (January 2008):	1,00 Euro (EUR)	= 9,48 Swedish Kronor (SEK)
	1,00 US Dollar (USD)	= 6,53 Swedish Kronor (SEK)
	1,00 British Pound (GBP)	= 12,73 Swedish Kronor (SEK)

## Airports

### **Halmstad Airport**

Halmstads Flygplats AB  
Halmstad Flygplats  
305 91 Halmstad  
Phone +46 35 18 26 00  
Fax +46 35 18 26 09  
E-mail [halmstadflygplats@halmstad.se](mailto:halmstadflygplats@halmstad.se)



### **Stockholm Arlanda International Airport**

Stockholm-Arlanda Airport  
LFV  
190 45 Stockholm-Arlanda  
Sweden  
Tel +46 8 797 60 00  
Email [arlanda@lfv.se](mailto:arlanda@lfv.se)  
Web <http://www.lfv.se>



Stockholm-Arlanda Airport (ARN), Sweden's leading international and domestic airport. It is located just outside Scandinavia's largest capital city Stockholm - and right at the heart of Scandinavia.

#### ***Trains to and from Arlanda:***

There are many alternatives if you are travelling to or from Arlanda, no matter where you are going and where you live. The airport has underground stations for both long-distance trains and high-speed shuttle trains; a direct flight connection to Halmstad Airport is available and operated by JZ Skyways. The flight to Halmstad is about one hour.

Long-distance trains depart from the underground Arlanda Central station, located directly below SkyCity. You can enter the station from the plaza at the centre of Sky City or from the Terminal 5 departure hall.

From the Central Station trains to Halmstad (Central station) run almost every hour. The journey takes up to 6 hours.

In the plaza at SkyCity, the SJ railway company has a travel office where you can buy long-distance train tickets and get information about train schedules.

For connections to Halmstad please check the [SJ Swedish railway website](#) or [Arlanda Airport trains](#)



### Gothenburg City Airport

Göteborg City Airport  
423 73 Säve  
Sweden  
Phone +46 31 92 60 60  
Fax +46 31 92 61 40  
Email [info@goteborgairport.se](mailto:info@goteborgairport.se)  
Web <http://www.goteborgairport.se>

### Gothenburg-Landvetter Airport

Gothenburg-Landvetter Airport  
438 80 Landvetter  
Sweden  
Phone +46 31 94 10 00  
Fax +46 31 94 10 99  
Email [informationen@got.lfv.se](mailto:informationen@got.lfv.se)  
Web <http://www.lfv.se>

#### **Trains/Busses to and from Gothenburg to Halmstad**

Shuttle busses run every 15-20 minutes, on weekends every 30 minutes, to and from the central bus station in Gothenburg, the **Nils-Ericson Terminal**, which is right next to the central railway station.

From there trains go to Halmstad every 1 – 2 hours.

There are also bus connections between Gothenburg and Halmstad with Swebus Express (~ every 2 hours).

For bus and train connections please visit the following websites:

Swebus Express: <http://www.swebusexpress.se>

Flygbussarn airport busses: <http://www.flygbussarnacharter.se>

SJ Swedish railway website: <http://www.sj.se/sj/jsp/polopoly.jsp?d=10&l=en>

To and from the airport – Gothenburg: <http://www.toandfromtheairport.com/gothenburg.html>

### Copenhagen Airport / Kastrup

Copenhagen Airports A/S  
P.O. Box 74, Lufthavnsboulevarden 6  
DK-2770 Kastrup  
Denmark  
Tel: +45 3231 3231  
Fax: +45 3231 3132  
E-mail: [cph@cph.dk](mailto:cph@cph.dk)  
Website: <http://www.cph.dk>

Copenhagen Airport is located at eight kilometres southeast of the Copenhagen city centre. It is in Kastrup, a town on the island of Amager.

The airport is Scandinavia's main airport with direct connections to a total of 132 destinations worldwide, 19 of which are Intercontinental, 84 European, 22 Nordic and 7 Domestic.

#### **Trains to and from Copenhagen Airport:**

The ticket office is located in Terminal 3 above the railway station. Tickets are also available from ticket machines in the station area.

There are lifts and travolators between the platforms and Terminal 3. You can take the free shuttle bus which runs between Terminal 1 and Terminal 3, where the station is located. The bus ride lasts about 5 minutes.

For connections to Halmstad please check the SJ Swedish railway website:

<http://www.sj.se/sj/jsp/polopoly.jsp?d=10&l=en>



## Recommended Hotels



### **First Hotel Mårtenson\*\*\*\***

Storgatan 52  
30243 Halmstad / Sweden  
Phone +46 35 177 575 Fax +46 35 125 875  
Email [martensson.halmstad@firsthotels.se](mailto:martensson.halmstad@firsthotels.se)  
Web <http://www.firsthotels.com>

### **ESAVS/Accessia Contingent**

#### **Room Rates:**

(Breakfast included)

#### **Single Room Standard**

Fri - Sun **SEK 798,00 (~ € 84,00)**  
Sun - Fri **SEK 898,00 (~ € 95,00)**

#### **Single Room Superior**

Fri - Sun **SEK 998,00 (~ € 105,00)**  
Sun - Fri **SEK 1098,00 (~ € 116,00)**

#### **Double Room Standard**

Fri - Sun **SEK 998,00 (~ € 105,00)**  
Sun - Fri **SEK 1098,00 (~ € 116,00)**

#### **Double Room Superior**

Fri - Sun **SEK 1198,00 (~ € 126,00)**  
Sun - Fri **SEK 1298,00 (~ € 137,00)**

**Distance to course location: 620 meters, 5 min to walk**

First Hotel Mårtenson is located by the river Nissan in the heart of Halmstad.

All rooms are equipped with shower / bath, phone, mini bar, trouser press / iron and hairdryer. Some rooms have air-conditioning. Wireless internet access is available.

Check in earliest at 15.00 hrs. Check out latest at 12.00 hrs on departure day.

For further details about the hotel please visit the [Mårtenson Hotel website](http://www.firsthotels.com).

**As a special service for ESAVS participants there will be free transport provided to the course location in bad weather.**

**When booking, please refer to the "ESAVS/Accessia" contingent.**

### **Directions to the First Hotel Mårtenson**

#### **By car:**

If you come from E6 south:

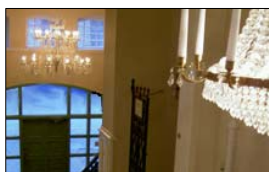
- Turn off the highway at the first Halmstad-sign.
- Follow the road to the city centre (Halmstad Centrum) of town.
- When you cross the river Nissan, turn right directly after the bridge.
- Follow the street towards the river, and then turn on the road to the left following the river until end of road. You will have arrived behind the hotel.

If you come from E6 north:

- Turn off the highway at the first at the first Halmstad-sign.
- Drive towards the city centre (Halmstad Centrum)
- Follow the signs "Lilla Torg" and turn left after the third traffic light.
- Park on the square (Lilla Torg). The hotel is located behind the white building of "Carlson"

#### **By train:**

The Central Station is situated 1 km off the hotel (5 min by car/taxi).



**Hotel Continental \*\*\*\***

Kungsgatan 5  
30245 Halmstad / Sweden  
Phone +46 35 176 300 Fax +46 35 128 604  
Email: [forfragan@continental-halmstad.se](mailto:forfragan@continental-halmstad.se)  
Web: <http://www.continental-halmstad.se>

**Room Rates**

**Distance to course location: 620 meters, 5 min to walk**

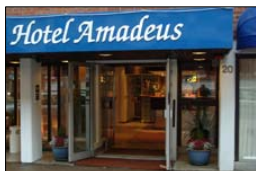
Hotel Continental is located in the centre of Halmstad, a few 100 metres from the railway station and about 3 km from the airport.

The hotel has 46 tastefully and individually decorated rooms including cable TV, ISDN and mini bar. Some rooms are also equipped with a Jacuzzi. All rooms are non-smoking.

The hotel also features a cosy recreation area with sauna, television, dart board and pool table.

**ESAVS has no contingent, please book on availability as early as possible.**

---



**Hotel Amadeus \*\*\***

Hvitfeldtsgatan 20  
302 34 Halmstad / Sweden  
Phone +46 35 166 000 Fax +46 35 126 493  
E-mail [info@amadeus.nu](mailto:info@amadeus.nu)  
Web <http://www.amadeus.nu/english>

**Room Rates**

**Distance to course location: 730 meters, 6 min to walk**

Hotel Amadeus is located in a quiet area in the inner city of Halmstad. It is 100 meters from the shopping centre and the bus terminal, 1 km from the train station and 3 km from the airport.

All rooms are equipped with phone, TV and have recently been renovated. There are parking places available close to the hotel (parking card available at the reception). Public parking is free of charge between 06.00 PM and 09.00 AM.

**ESAVS has no contingent, please book on availability as early as possible.**

---



**First Camp Tylösand**

Kungsvägen 3  
302 70 Halmstad  
Sweden  
Phone +46 35 305 10 Fax +46 35 327 78  
Email [tylosand@firstcamp.se](mailto:tylosand@firstcamp.se)  
Web <http://www.firstcamp.se/tylosand/english>

**Rates Camping**  
**Rates Cottages**

**Distance to course location: 11 km, 15 min by car**

First Camp Tylösand is one of the premier camp grounds of the west coast of Sweden. The camp ground offers camping pitches and more than 30 cottages of different sizes close to a beautiful beach.

Many of the camping pitches have connections for electricity, cable TV, water and drainage. All cottages provide shower/WC, TV, covered veranda and outdoor furniture.

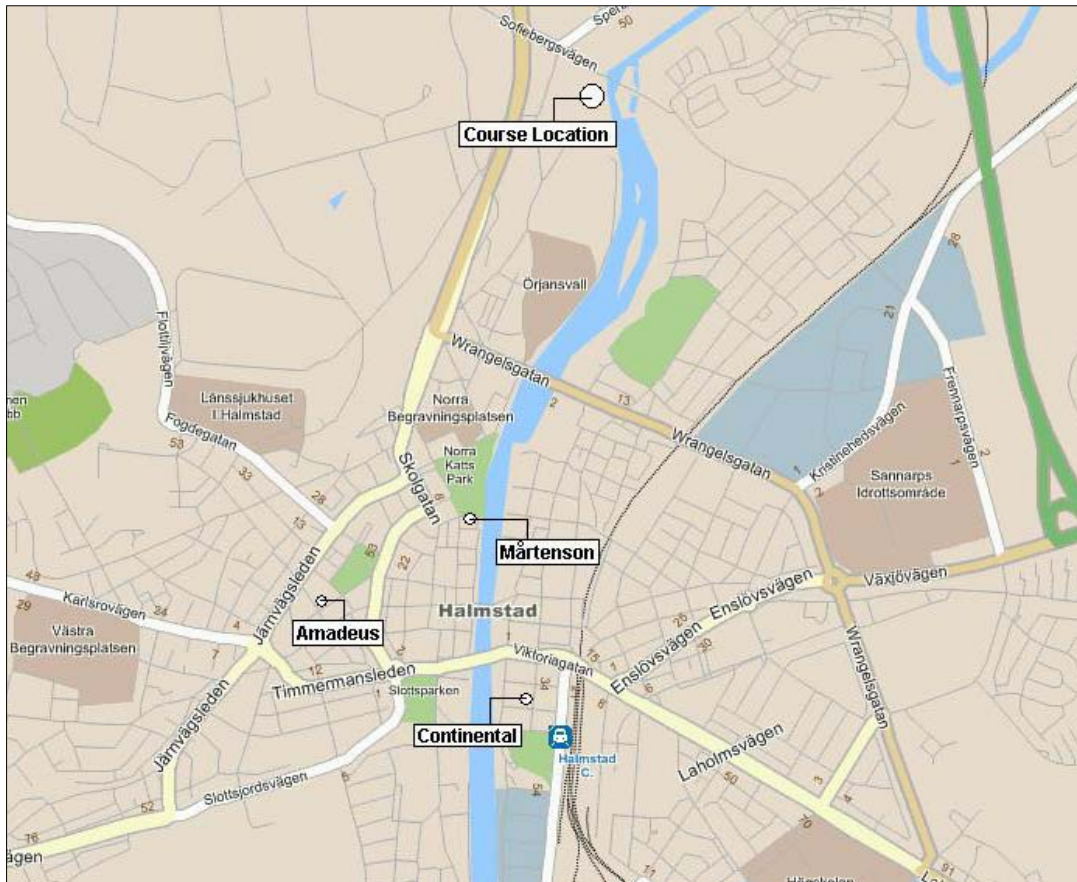
For further details and pictures please visit the [camp grounds website](http://www.firstcamp.se/tylosand/english).

**ESAVS has no contingent, please book on availability as early as possible.**

Busses (line no. 10 or 64) run between Tylösand and Halmstad centre every hour (30 min ride)  
Please find bus timetables at <http://www.hlt.se>



### Map of Hotel Locations



### Map of Camping Place Location



**hotel.de** For alternative accommodation please see [Hotels in Halmstad](#)